

Warson Woods/Glendale Public Safety Partnership

A Partnership for the Future



Warson Woods and Glendale: Partners for Over 50 Years

- Glendale has partnered with Warson Woods to provide high quality, cost effective fire protection services for over 50 years
- Glendale has partnered with Warson Woods for many years to provide police & fire dispatching service and prisoner holding services
- 2018 saw Warson Woods and Glendale (plus Oakland) come together yet again to partner for court administration services

Existing Partnerships

Fire Services



Court Administration



Warson Woods/Glendale Public Safety Partnership

In addition to existing Fire/EMS services, Police services to Warson Woods under an expanded partnership would include:

- Professional & Accredited Police Service
- A Community Policing model of service
- Routine & Preventative Patrols of all residential, business and park areas
- Frequent & Extra Patrols when requested
- Routine Business Checks
- Residential Vacation Checks when requested

Warson Woods/Glendale Public Safety Partnership

Continued:

- Traffic & Speed Enforcement
- Traffic Surveys using a portable speed display monitor/trailer when requested and/or when applicable
- Investigative Services & conduct follow-up investigations as deemed appropriate
- Community & Public Relations Activities as requested (i.e., speaking at schools, churches, business or other organizations)

Warson Woods/Glendale Public Safety Partnership

Continued:

- Police Services & Security to Community Events (Board of Aldermen Meetings, City Fairs and/or Celebrations)
- POST Certified Training & Instruction (Firearms, Taser, BAC, SFST, CIT, CDRT & MACTAC) to ensure all police officers are well trained and meet the requirements of Missouri State Statutes
- CERT (Community Emergency Response Team) training & instruction when applicable
- Providing residents with a Police Ride-Along Program upon request

Warson Woods/Glendale Public Safety Partnership

Continued:

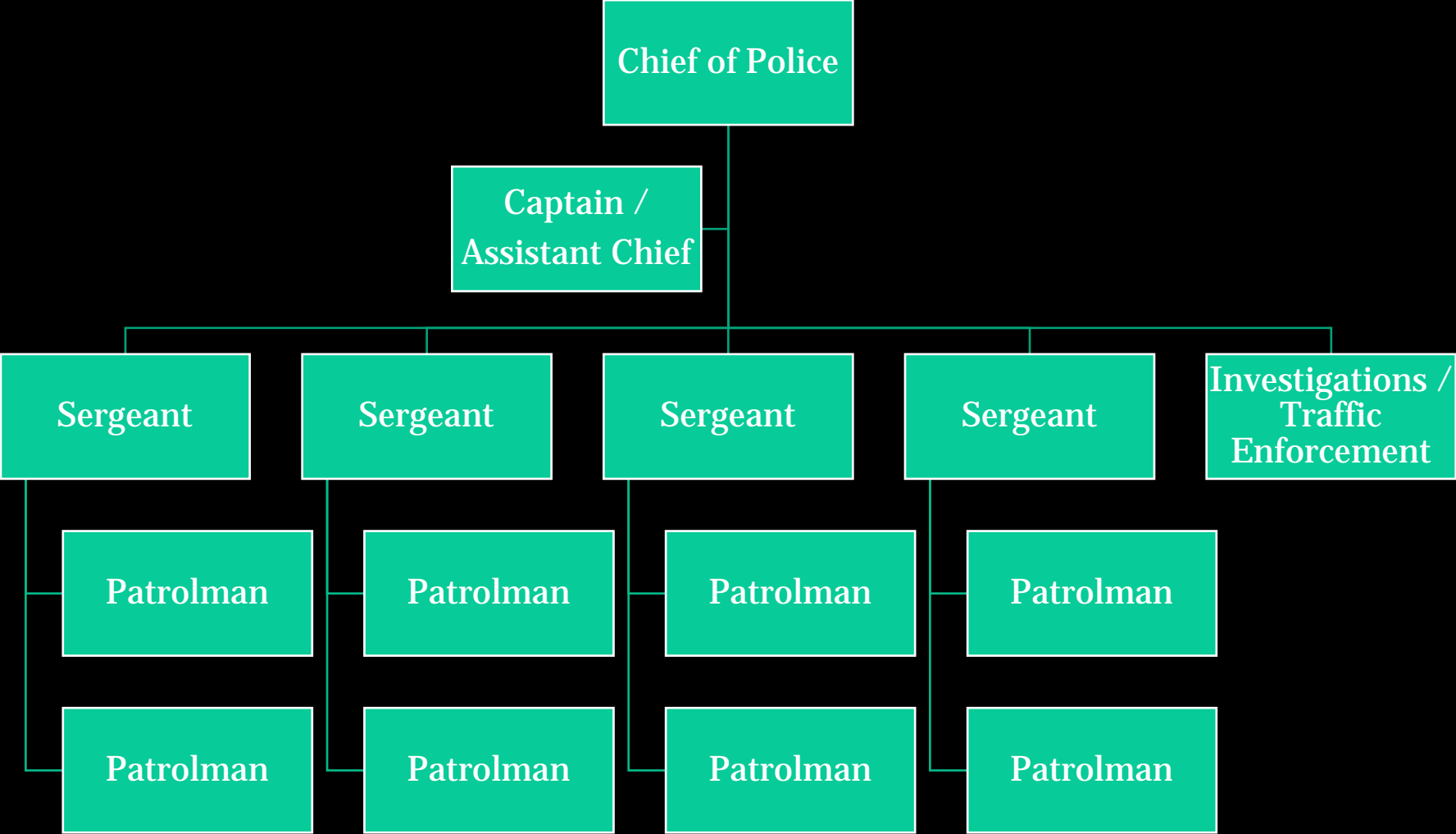
- Providing tours of the newly renovated Police & Fire Departments upon request
- Coordinating Neighborhood Watch Programs when applicable
- Attendance at Board of Aldermen meetings by the Chief of Police, Assistant Chief, and/or City Administrator on a monthly basis and/or when requested
- Provide detailed Monthly & Annual Reports

Warson Woods/Glendale Police Partnership

- In partnering with Warson Woods, Glendale will:
 - Hire 5 existing Warson Woods police officers to provide continuity of service to the residents and officials of Warson Woods.
 - 4 of these positions are new & 1 would fill a current vacancy in the Glendale Police Department that we are holding open for this process.
 - Warson Woods would receive the exact same 24/7 police coverage as Glendale does.
 - When 3 or more police officers are on duty, an officer would be assigned to patrol Warson Woods only.
 - When 2 police officers are on duty, an officer will be assigned to patrol Warson Woods and a small portion of northern Glendale.



New Police Department Organizational Chart



Why a Public Safety Partnership with Glendale?

- A Warson Woods/Glendale Public Safety Partnership is a win-win for both communities
 - Warson Woods realizes significant financial savings and expanded police services
 - Warson Woods retains familiar faces and police identity by Glendale hiring 5 existing Warson Woods police officers
 - Both communities see increased police coverage as Glendale would institute minimum staffing requirements of at least 2 officers on duty at a time, with most shifts having at least 3 police officers
 - Monday - Friday from 8 am until 5 pm will routinely see 4 or 5 sworn personnel on duty (3 patrol officers plus Chief Beaton & Captain Catlett) who would be available to respond to emergency situations as needed

Why a Public Safety Partnership with Glendale?

- A Warson Woods/Glendale Public Safety Partnership is a win-win for both communities
 - The police department would operate under one set of policies & procedures
 - All police officers would work and train together as one operational unit
 - Allows both communities to retain the “small town” feel enjoyed and highly valued by our residents
 - Warson Woods and Glendale continues to have an excellent relationship
 - Warson Woods can be assured of receiving the highest levels of service from our entire organization.

The Warson Woods/Glendale Police Partnership

Example of a Police Vehicle to show both communities that
“we are your police provider”



Questions?

Thank you for your time and consideration of this partnership